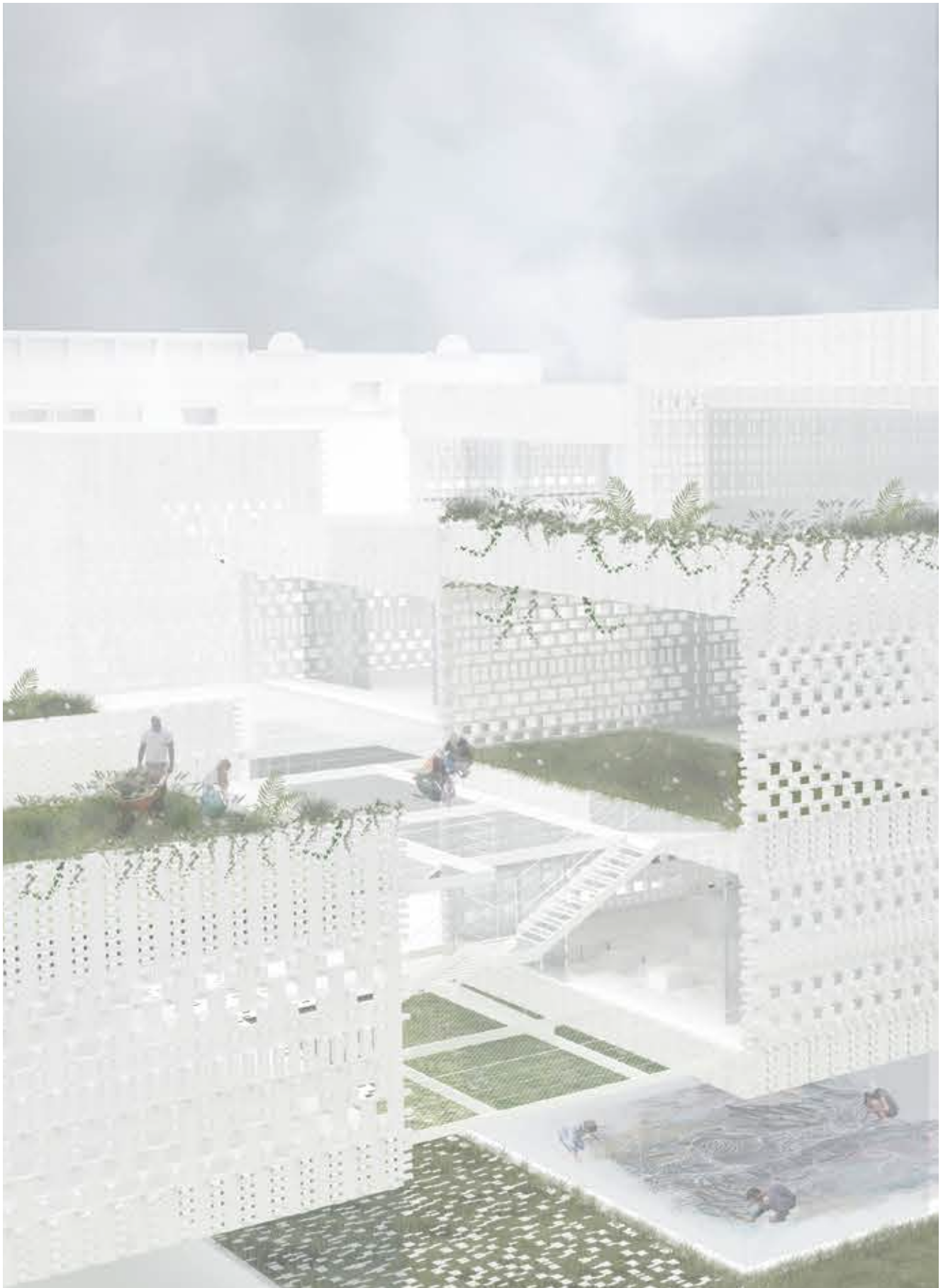


ARCHITECTURE PORTFOLIO

Damini Nichinnamettlu

damini.com.au



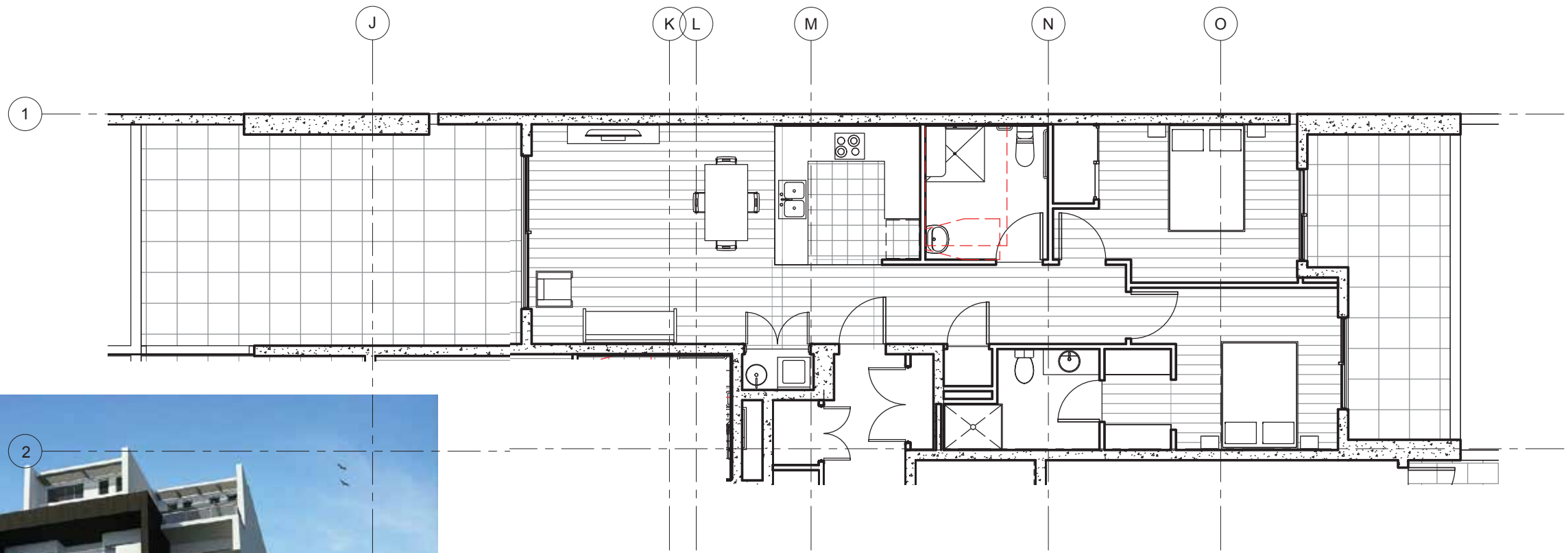
RESIDENTIAL APARTMENT

WORK PROJECT - 2017
RESIDENTIAL APARTMENT

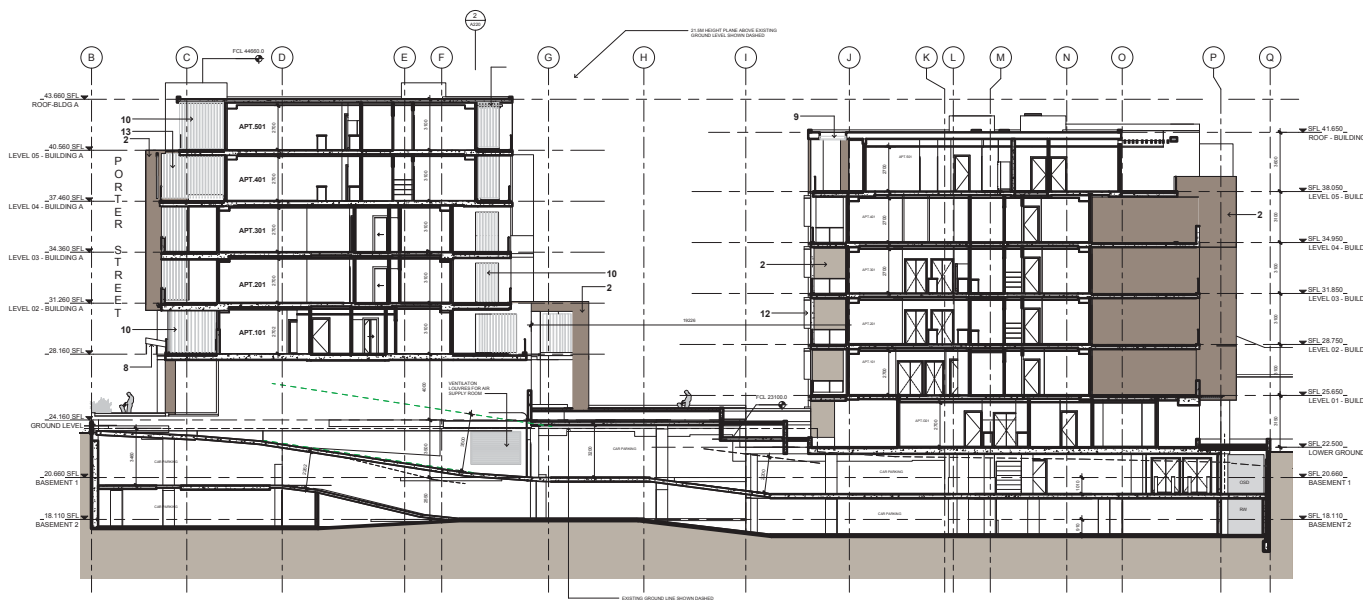
The project required the modelling and documentation of a 4 storey residential apartments from the DA approval stage through to the construction certificate stage.



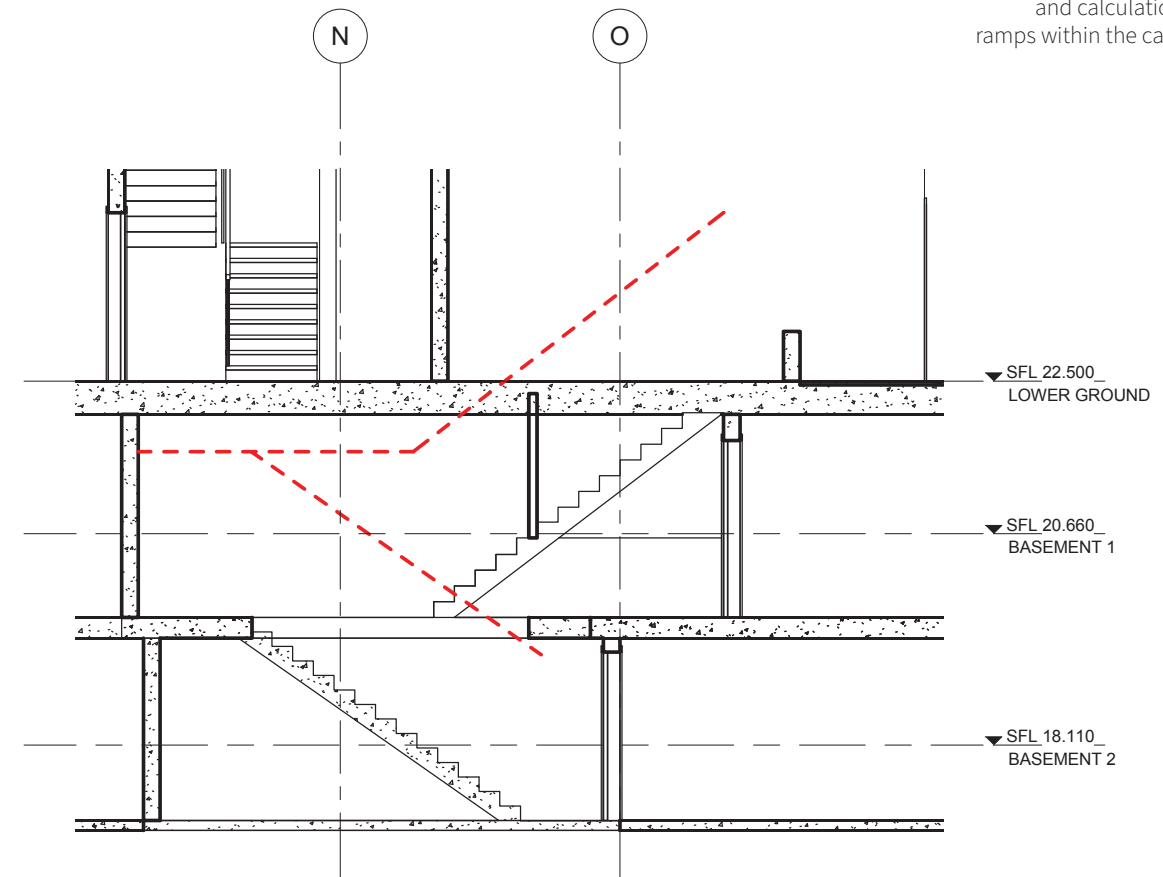
2



Within this project, I worked on modeling sections of the walls, floors, and doors within the building complex. I also worked on the documentation and calculations of the stairs and ramps within the car park and building.



SECTION 1 - CROSS SITE



5 STAIR 3 - SECTION
1 : 50

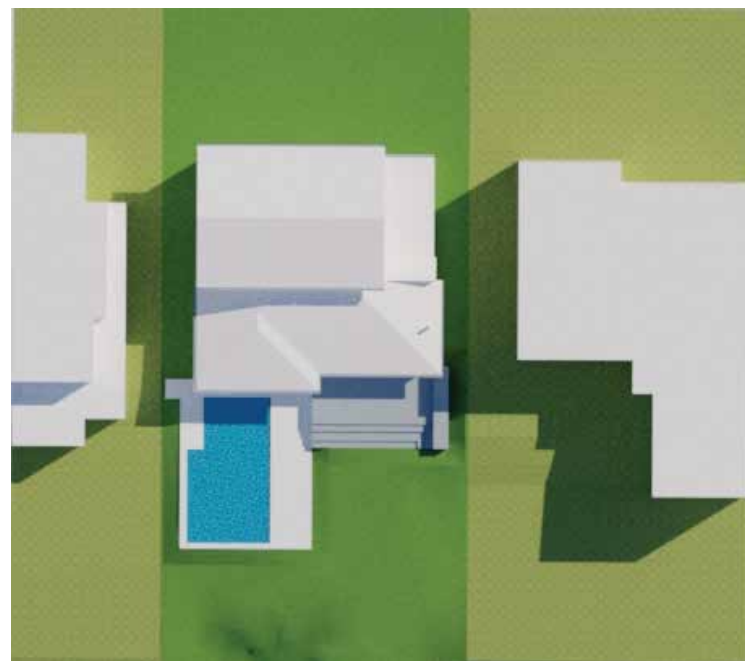
Working through circulation design and detailing the stairs wells and parking garage.

HOUSE ADDITION

WORK PROJECT - 2019
1ST STOREY ADDITION

An existing house that wanted a first storey addition to match the floorplan of the ground floor

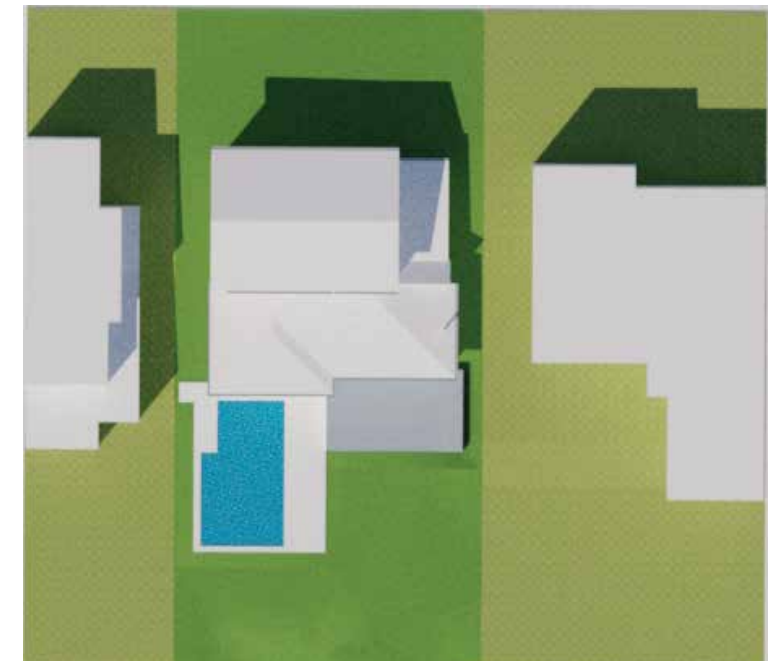
I worked on this project from the initial client meeting to the construction phase. This project required a complete sketch up model of both the existing and proposed design. I also prepared supporting documents for the council applications including the shadow diagrams, height cages and DA documentation.



9:00



12:00



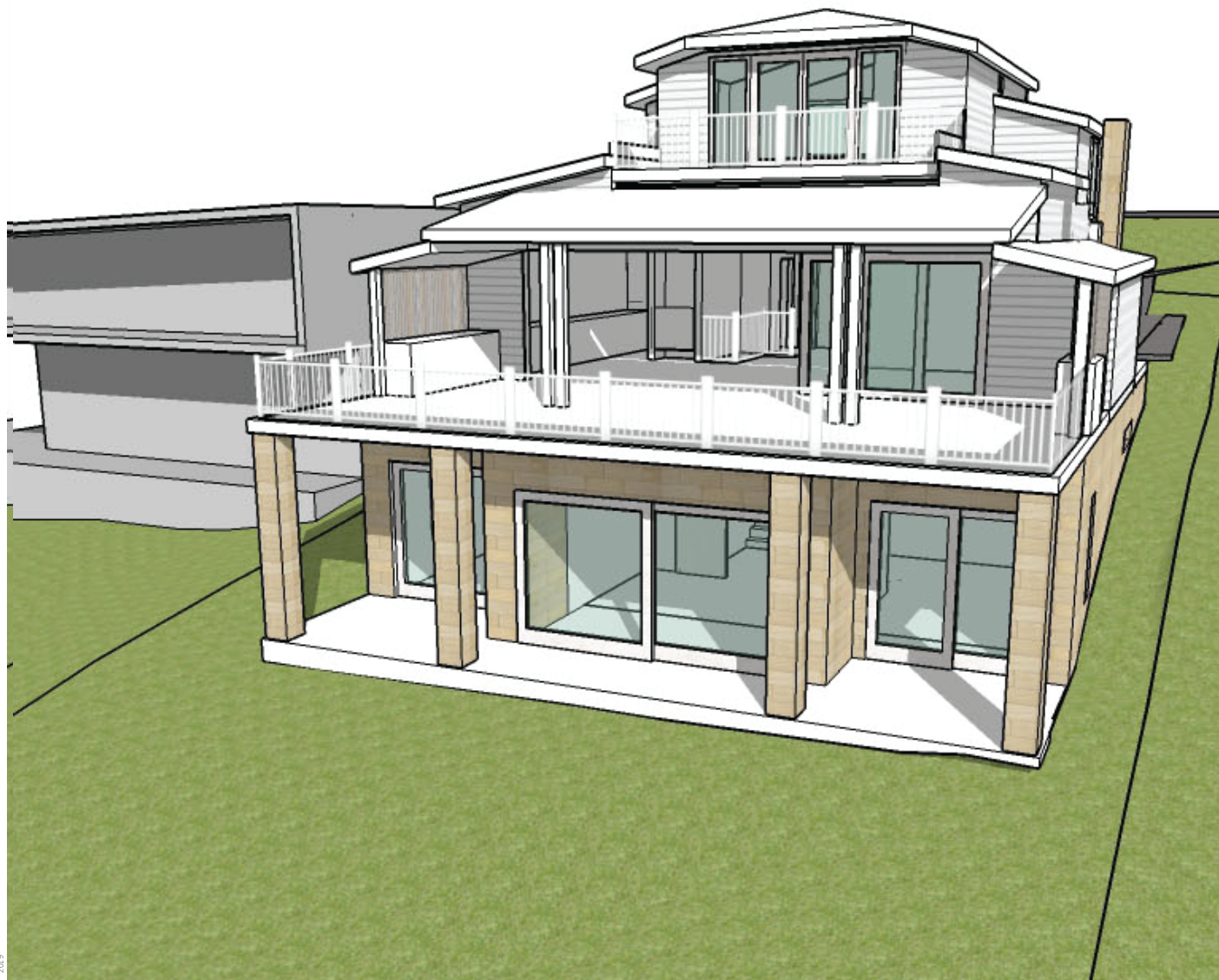
15:00

BEACH HOUSE

HOLIDAY HOUSE - 2019
RESIDENTIAL RENOVATION

The existing house needed a refurbishment which included changing the internal program.

I worked on modeling the house to express the design for the client and provide the resources for council approval.

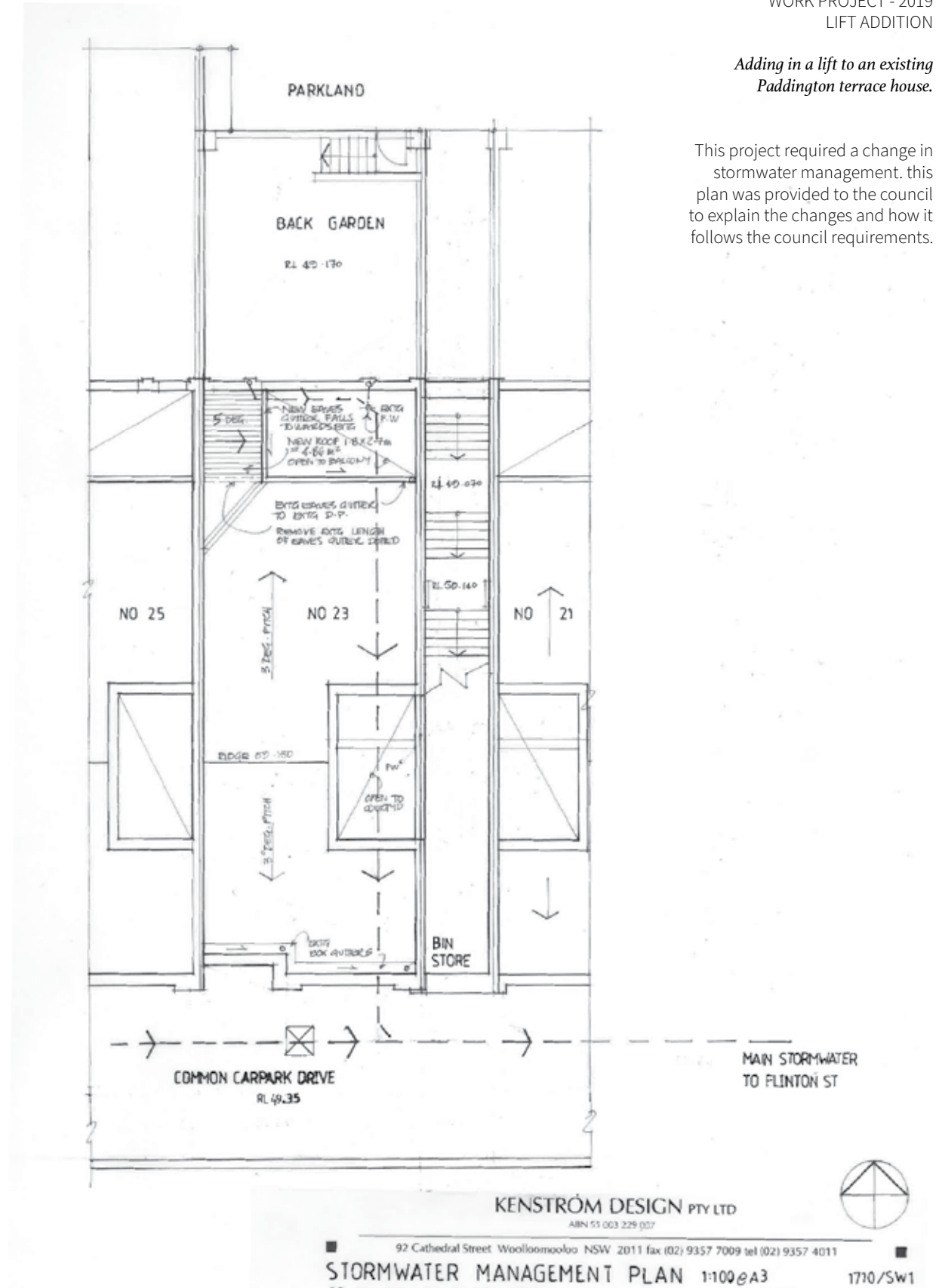


LIFT ADDITION

WORK PROJECT - 2019
LIFT ADDITION

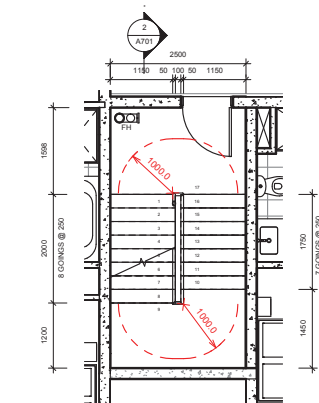
Adding in a lift to an existing Paddington terrace house.

This project required a change in stormwater management. this plan was provided to the council to explain the changes and how it follows the council requirements.

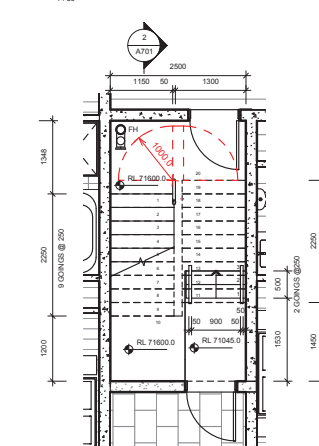


The project required the modelling and documentation of a 4 storey residential apartments from the DA approval stage through to the construction certificate stage.

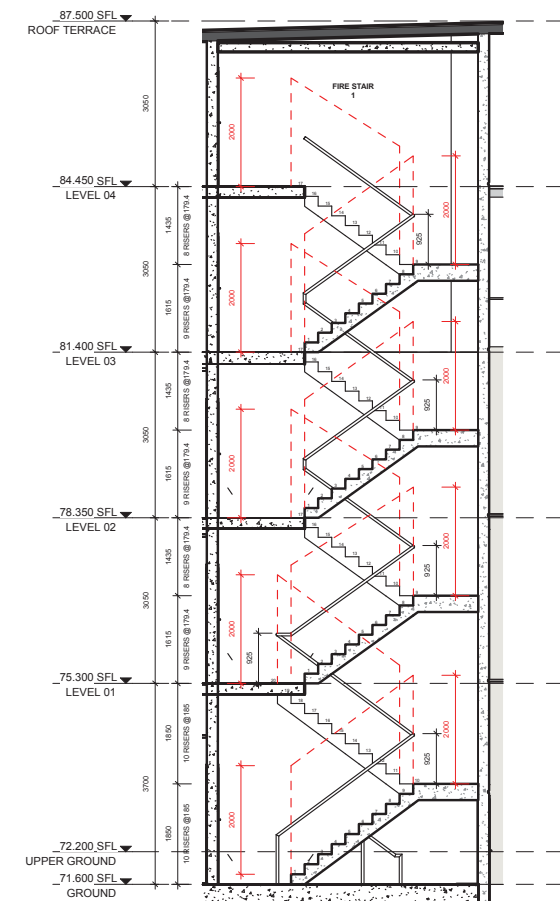
3 STAIR 1 - LEVEL 4 - PLAN
1:60



4 STAIR 1 - TYPICAL - PLAN



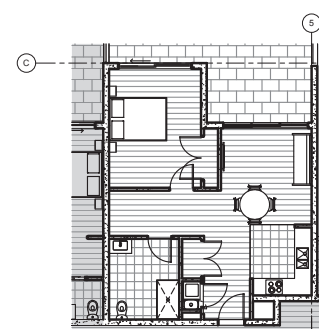
1 STAIR 1 - GROUND - PLAN



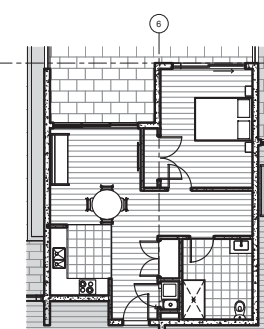
2 STAIR 1 - SECTION

1 SOUTH ELEVATION

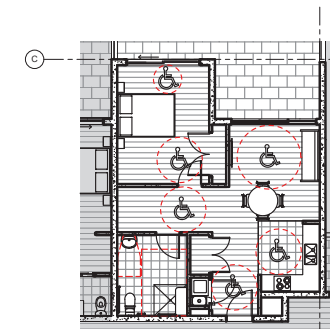
ISSUE FOR TENDER



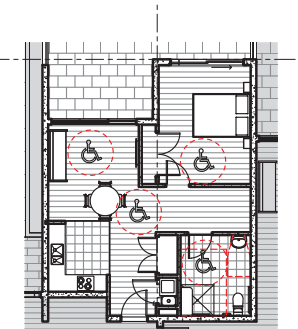
② ADAPTABLE PLAN - APT G04 - PRE-ADAPTATION



④ ADAPTABLE PLAN - APT G05 - PRE-ADAPTATION



① ADAPTABLE PLAN - APT G04 - POST-ADAPTATION

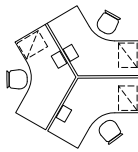
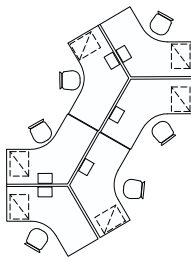
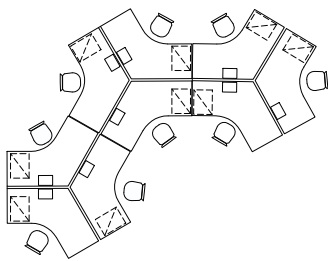
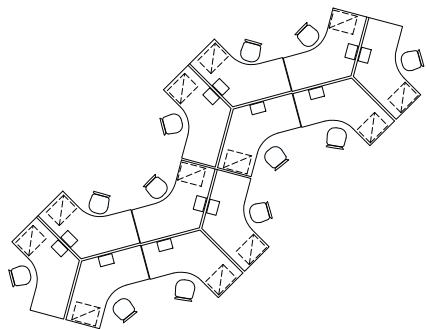
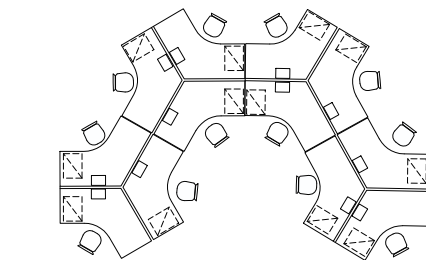
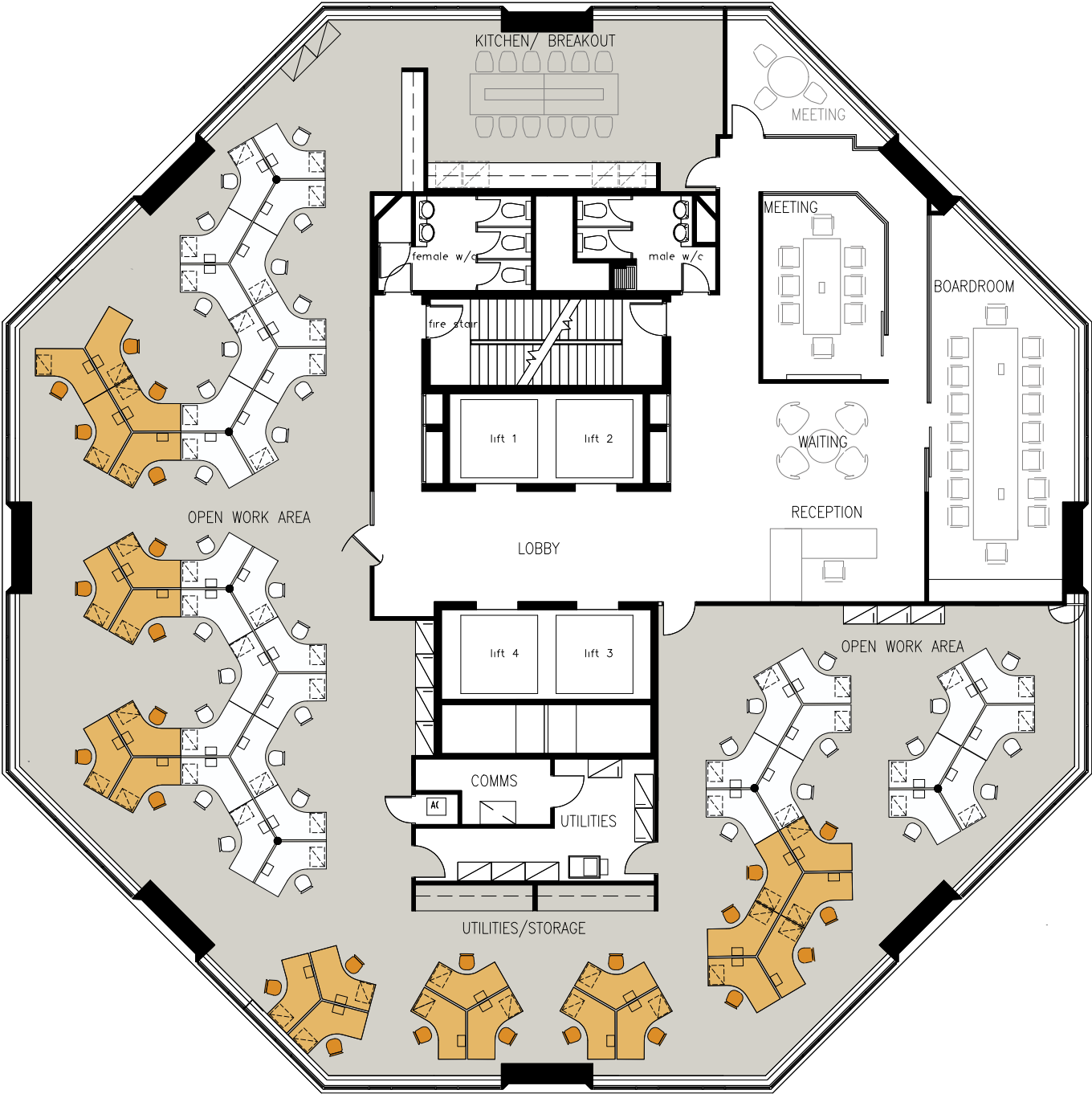


③ ADAPTABLE PLAN - APT G05 - POST-ADAPTATION

OFFICE FITOUT

WORK PROJECT - 2017
OFFICE LAYOUT DESIGN

This office required a reorganisation of interiors, where they needed to accommodate more employees that they currently had. With the use of their additional furniture styles, I had to create space to allow the maximum working space.



Produced many organisational options along with furniture renderings showing optional interior ideas.

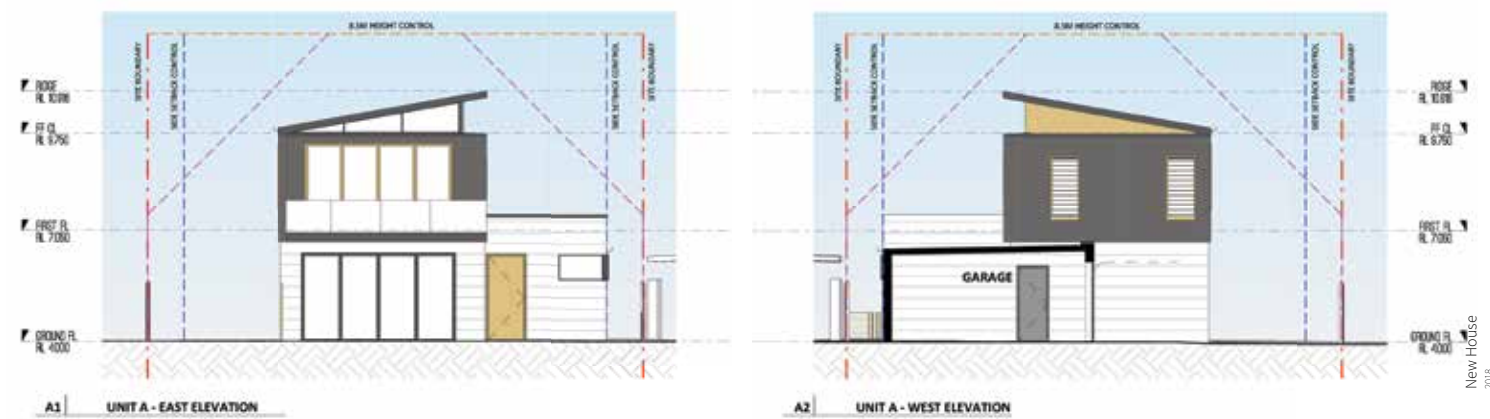
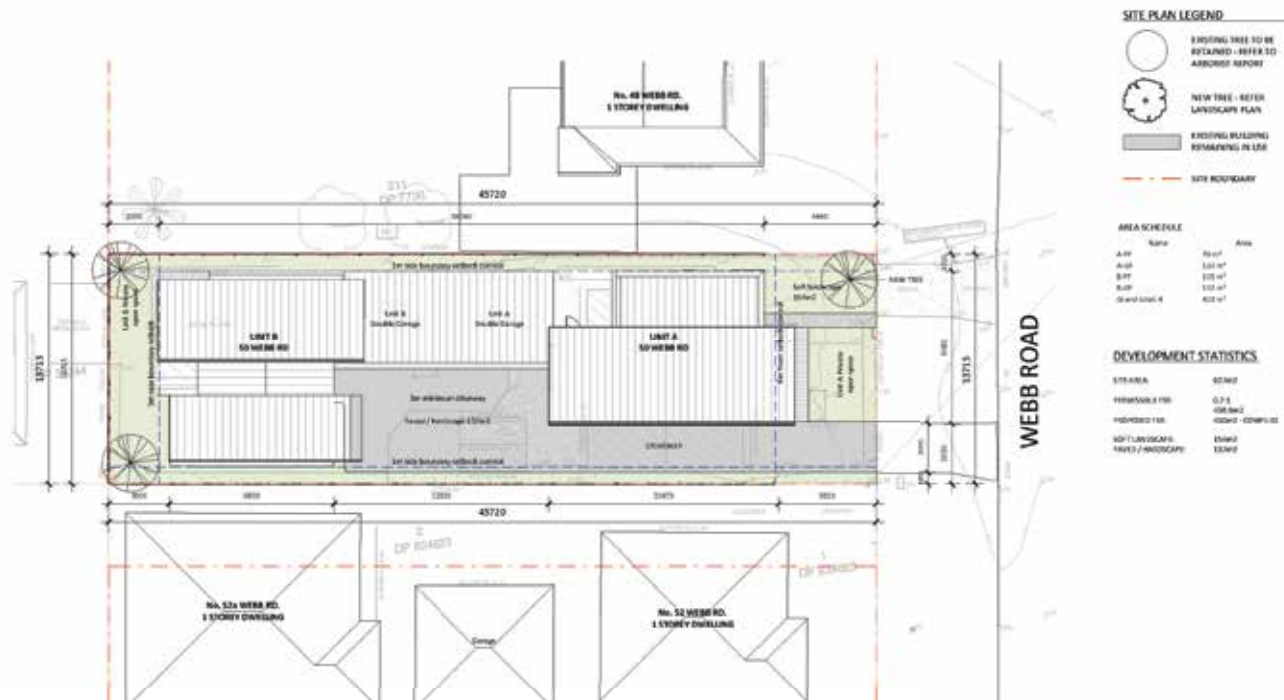


NEW HOUSE

WORK PROJECT - 2018
PRIVATE RESIDENTIAL

This project involved the modeling and documentation of a new private residence

I worked on the Revit model and the drawing package for the initial design phase. This included the site plan, floor plans and elevations.



TEMPLE

SELF DIRECTED - 2020 (Ongoing)
TEMPLE ADDITION

Renovation work to increase the available facility for the community. Temple management presented their requests and I was able to research the context site, and council regulations to propose designs that suited their needs. I managed communication with the council the management and the community. This is an ongoing project and is currently in the design and development phase.

The project has many levels of complexity and had to address issues of noise, crowd control, restricted circulation and multiple programs. The current design extends over the current carpark and creates a large adaptable hall. The sleeping quarters are on the top floor and are organised to create 4 different spatial arrangements. The main stand out will be the ornamental tower which will sit on top of the alter and pierce all the floors.



Design elements used to influence aesthetics and facade.



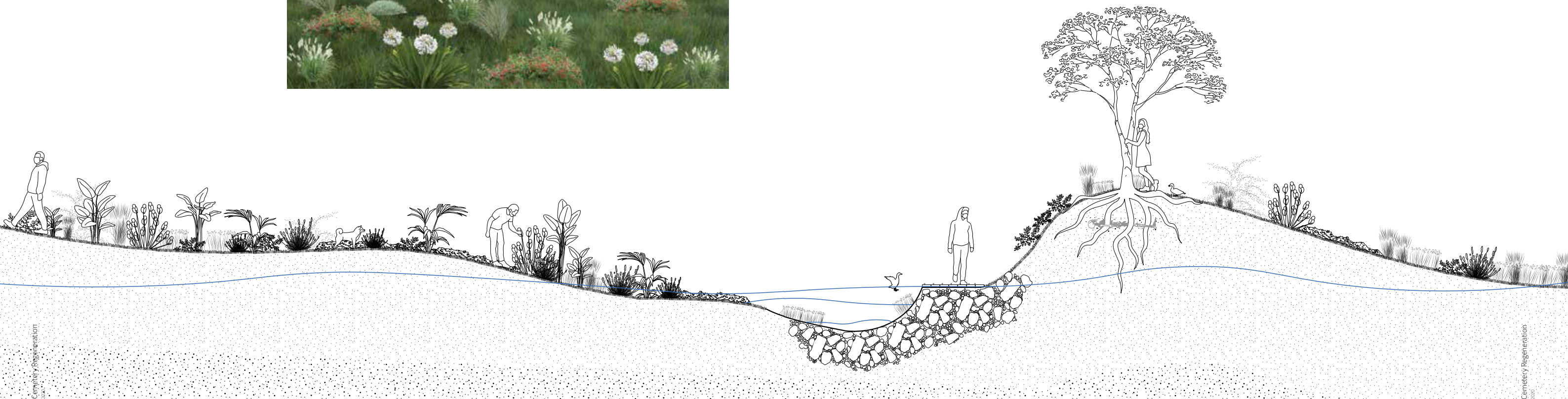
CEMETERY REGENERATION

DESIGN PROJECT - 2020
URBAN REGENERATION

This project involved understanding context and history and recreate to suit the current and future

The notion of disaster is created from our inability to understand how to adapt to it. We will harmonize the experience of the environment with the process of detachment of loved ones through the creation of a funeral park.

The senses and the natural environment are now the leading roles of the event, provoking an experience that is a procession for acceptance.



SOCIAL HOUSE

DESIGN PROJECT - 2021
DREAM HOUSE

The client and designer relationship was the basis of this project, where we designed the perfect dream home.

The dream house was created from a collection of memories presented by the client and had to create a home design based on dreamscapes.

This house pushes the extent to the concept of the Public. How public can a house be? The design opens up the house to the social context and inverts a normally incredibly private space into a social condenser

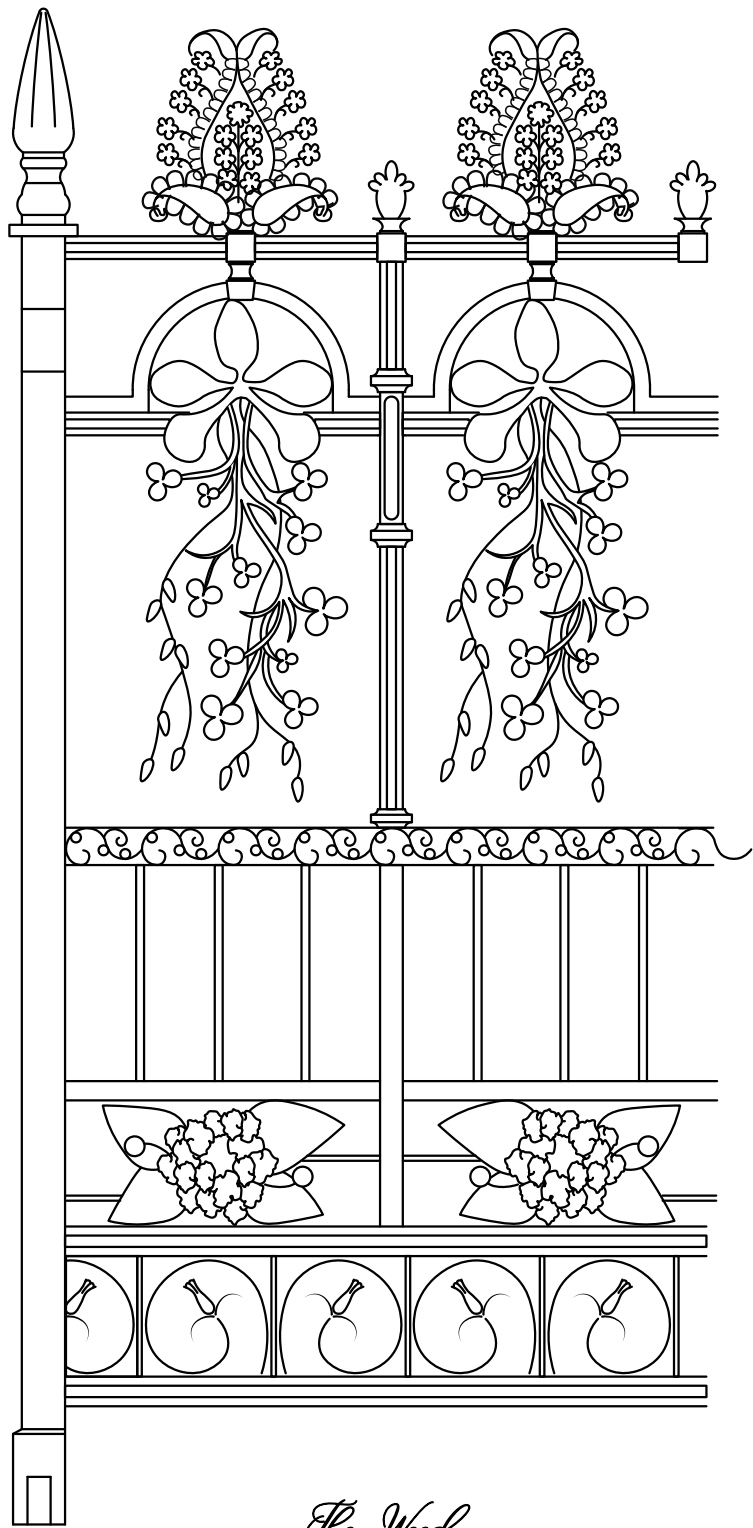


DECOLONISING DESIGN

DESIGN PROJECT - 2020
Research

*This project involved researching
and understanding my position and
interests within architecture.*

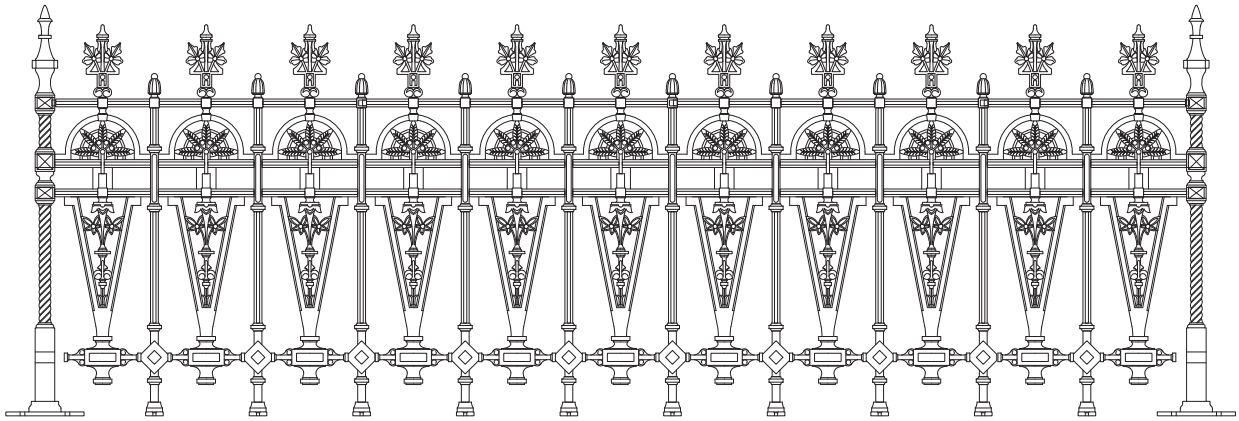
Researching and analysing Indian
textiles through out history and
what architectural objects may
have been influenced by their
intricate details.



The Weed



Hand drawn analysis of Indian textiles



Railing design from the Sun Foundry 1870's

ENVIRONMENTAL SYSTEMS

STUDIO PROJECT - 2017
VERTICAL HIGH SCHOOL

A competition to present a concept scheme and development proposals for an intercity high school. Its main focus was on integrated systems in all different scales. The design was to encourage public connectedness and to foster active partnerships with the city of Sydney and its site.

My proposal for a high rise school uses plants as an educational tool and also as a way of creating cleaner air for the students to study in. The design has created an innovate system of using the plants to filter the air, waste water from the building and the sun entering the building.

VEGETATION GROWS WITH THE FRINGES TO OFFER SHADING, BUILDING CHARACTER AND PROGRAMMATIC RELATIONSHIP TO SPECIFIC CLASSES INSIDE

INTEGRATED LIGHTING SYSTEM

RETURN AIR THROUGH THE SUSPENDED CEILING CAVITY ENSURES A WELL VENTILATED SPACE AT HEAD HEIGHT

VEGETATION GROWTH SYSTEMS INCLUDE WICKING BEDS TO ENSURE THE MOST EFFICIENT USE OF WATER

DOUBLE GLAZED GLAZING SYSTEM ALLOWS PROJECT AND COLLABORATION SPACES TO BE FILLED WITH NATURAL LIGHT

WATER CAPTURE AND RECYCLING THROUGH NATURAL TREATMENT PROCESSES

SUSPENDED CEILING CAVITY

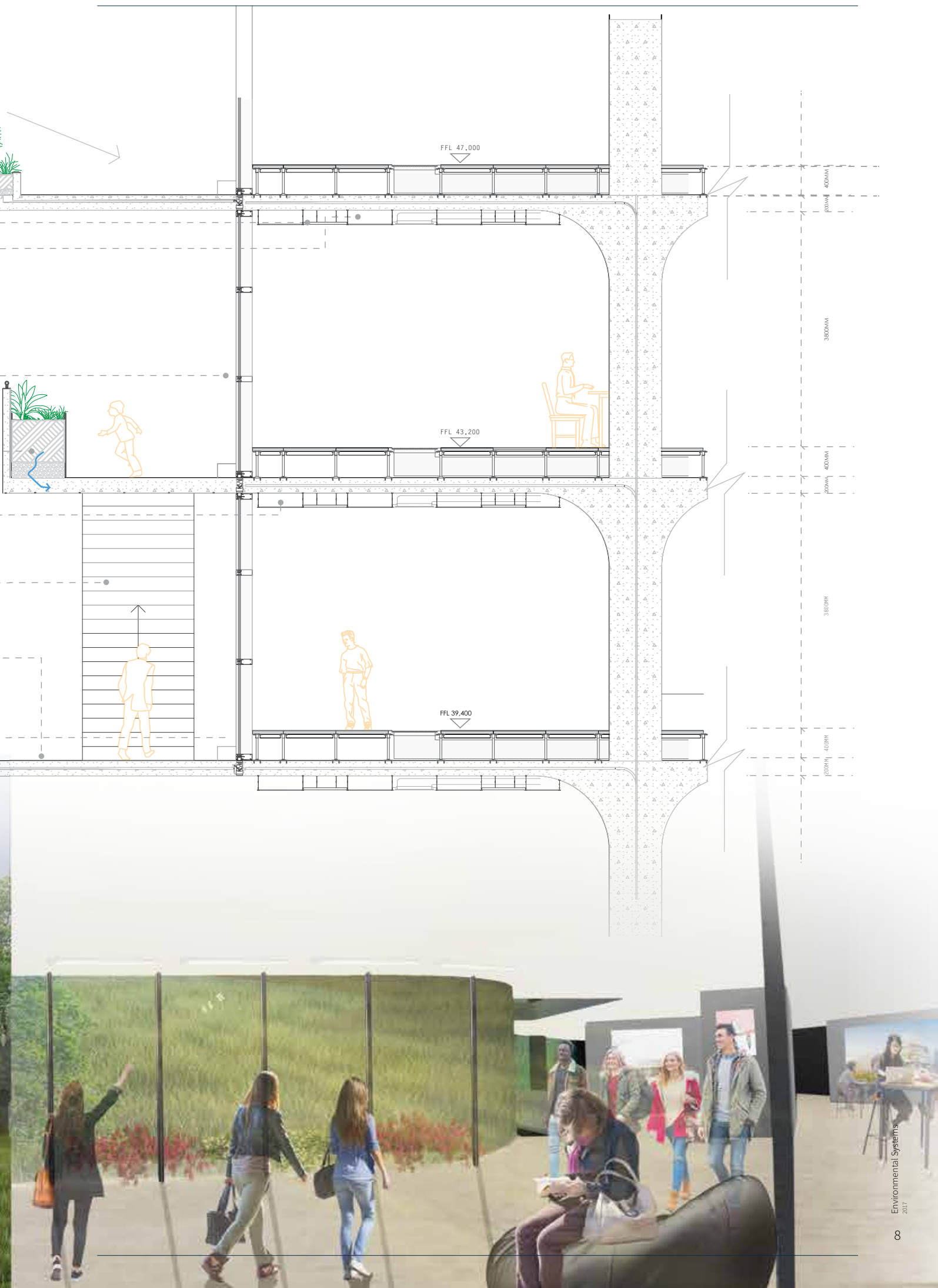
STUDENT'S EXTERNAL STAIRS ACCOMPANY THE PEDAGOGY AND LOGIC OF VISUAL AND PHYSICAL RELATIONS AND THE BUILDING ITSELF AS A DYNAMIC PIECE OF ART

200MM REINFORCED CONCRETE SLAB AND COLUMN WITH AN INTEGRATED WATER TRANSFER SYSTEM

AIR FLOOR PLENUM EFFICIENTLY DISTRIBUTES FRESH AIR FROM GROUND LEVEL

DIFFERENT PLANTS MEET DIFFERENT FUNCTIONS :

1. AIR FILTRATION
2. WATER FILTRATION
3. NATURAL SHADE AND INSPIRATION



SCHOOL DESIGN

STUDIO PROJECT - 2018
INNER CITY HIGH SCHOOL

*A competition to design an inner city
high school for the creative arts.
This project evolved from the
conceptual stage to having
completed drawing sets and a model.*

My proposal for the school involves
breaking down the monolithic
structure of a school into smaller
buildings allowing the students to
have an open circulation and a free
flow of creativity.

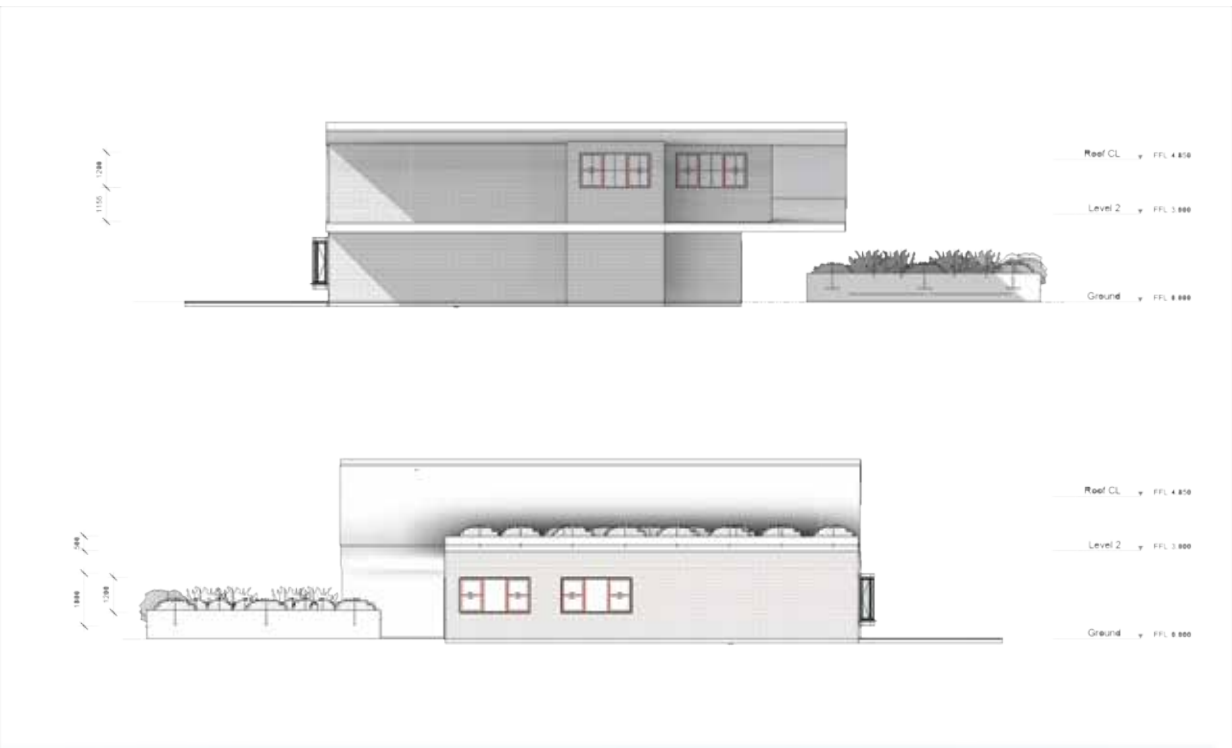
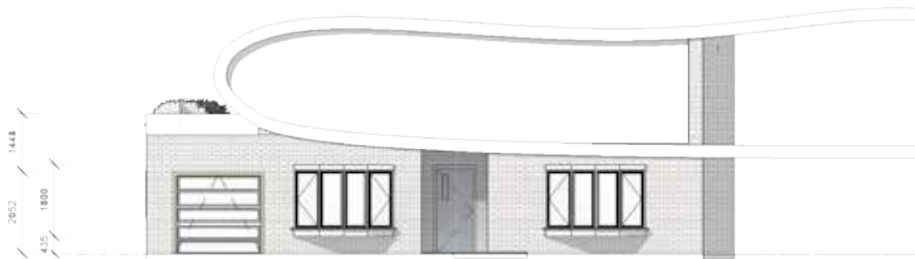


REVIT HOUSE

REVIT ELECTIVE PROJECT - 2016
HOUSE WITH SHARED ROOF

Design a house that shares a creative component with the neighbouring block, whilst still maintaining privacy.

A 2 story house that is modern Victorian style inspired, with bay windows and sweeping grand staircases along with a living space that opens up to the backyard. I created my own custom families of tables, windows and garden beds along with designing and modeling the entire house from scratch. The sweeping staircase and decorative ceiling were molded to fit into the structure and organisational elements of the house. The render was also made to showcase how the sweeping roof creates an additional statement piece in the house.

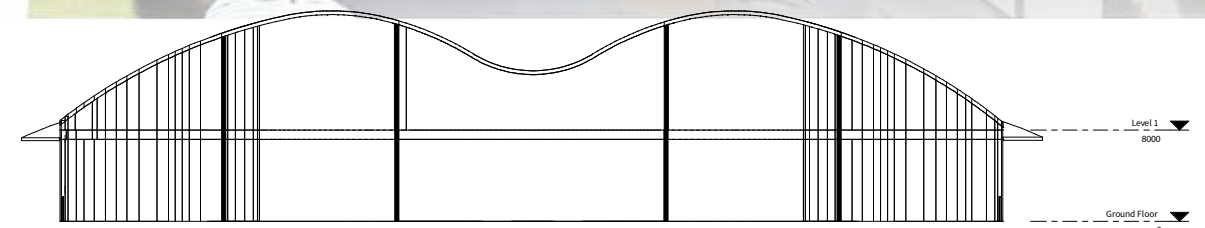
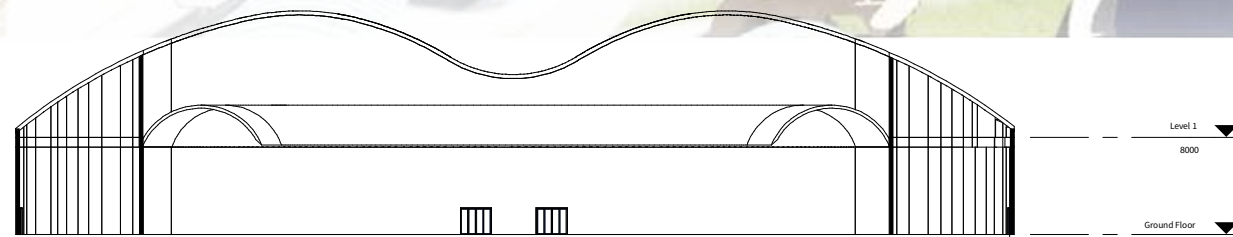


AIRPORT DESIGN

REVIT ELECTIVE PROJECT - 2016
AIRPORT DESIGN

A group project which involves designing, modelling and documenting with the use of BIM. The project, split into components meant that the work was to be coordinated very efficiently.

Within this project, I worked on the designing and modeled the entirety of the structure and materiality of the airport. This included creating many families such as spider clamps, furniture components and automatic door ways to support and populate the interiors.



JEWELLERY

Custom Jewellery - 2016

This is part of a collection I made for specific idols. Due to the delicate nature of the job there was a lot of detailing that was required. The pieces were made to suit specific measurements and had to be beautiful while being durable



Necklaces, bangles and hand pieces



All the jewellery worn by the idols are pieces I made

GRAPHIC DESIGN

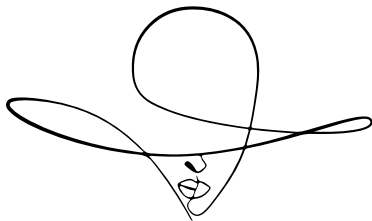
Graphic design 2019 - 2020

I have been working on graphics for many year. This includes, flyers, poster, logos and marketing material



THE **HAPPY** JIVA

Logo



GLAMOUR AVENUE
Dress Hire

Business card



Event poster

VIDEOGRAPHY

Promotional video - 2019

Given the task to make a promotional video for an event. I created the introduction logo along with the video and the marketing material throughout the video



<https://www.youtube.com/watch?v=LI2JREqApvk>